

SigmaScale Lite



Looking for efficiency and simplicity for your weighing operations?

We have the optimal solution for you.

SigmaScale Lite is a weighing system specifically designed for unattended weighing operations. It is composed of two programs, one for data management (clients, orders, products, ...) and the other for the weighing terminal.

The user-friendly interface and ease of use of the terminal are such that all drivers are able to perform their weighing without problem.

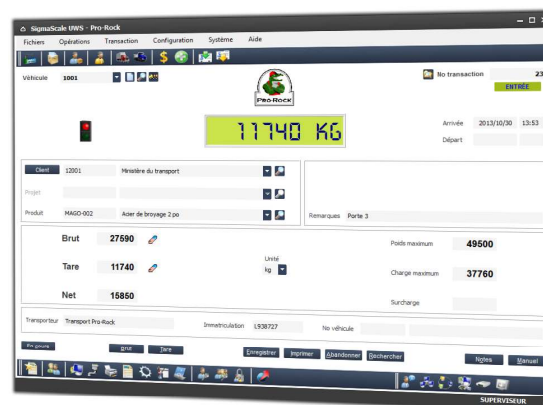
The terminal works as an assistant guiding the driver in the weighing operation by asking simple questions and allowing him to enter the required information through a touch screen or a keyboard and mouse.

SigmaScale Lite includes a set of powerful features that simplify your daily operations, such as the recall of transactions in progress, the calculation of the cumulative at several levels, the transfer to the accounting system and other related systems, the printing of a variety of lists and reports also viewable on the screen, and several other features.

SigmaScale Lite will ensure a fast and efficient processing of your weighing and full control of your management. Optimize your operations with its power and flexibility.



The weighing terminal can be installed at the scale in order to avoid the driver out of his vehicle or installed in a cabin near the scale. In this case, it can be installed on a standard computer equipped with a touch screen or a standard screen with keyboard and mouse.



Designed for

- ✓ Mining
- ✓ Bulk transport
- ✓ Food industry

SIGMASYS
Optimal Solutions



www.sigmasys.net



info@sigmasys.net



Montreal : 514-312-4312
Ottawa : 613-482-9693
Fax : 514-312-2725

SigmaScale Lite

Main Features

Weighing Terminal

- ✓ Simple and user-friendly interface for drivers
- ✓ Terminal operation on touch screen or standard screen with keyboard and mouse
- ✓ Fully configurable terminal depending on your needs
- ✓ Automatic recall of a vehicle' last transaction information
- ✓ Summary window and the possibility of correction by the driver
- ✓ Summary window and the possibility of correction by the driver
- ✓ Reprint of tickets
- ✓ Ticket printing on several types of printers (laser, matrix, thermal) and different paper sizes

- ✓ Bilingual terminal

System

- ✓ Multi-enterprise system
- ✓ Management of clients, projects, suppliers, client orders and supplier orders
- ✓ Public weighing
- ✓ Manual entry of transactions allowed
- ✓ Visualization of transactions in progress
- ✓ Cumulative at all levels
- ✓ Visualization of lists and reports on screen
- ✓ M.T.Q. reports (V150 et V863)
- ✓ Report generator / SQL query editor
- ✓ Export data in different formats (Excel, Word, HTML, XML, PDF)
- ✓ Integration with existing systems
- ✓ Interactive help

Options

- Identification by barcode, magnetic cards or RF tags
- Traffic lights and/or gates control
- Electronic signature
- Interface with existing systems
- Possibility of adapting the software to your the specific needs

View and export your operation results very quickly with the transaction table that has a very powerful filtering feature.

No	T / S	No Client	Client	No projet	Projet	No produit	Produit	Vitesse
500143	Sortie	203	R. Construction			30011	Pierre concassée 20-40 mm (3)	PR50073
500142	Sortie	204	Construction RCL inc.			89	Pierre publique	PR50060
500141	Sortie	301	Lamthe - Threlkay			30003	Pierre concassée 20 mm (2) (4)	PR50027
500139	Sortie	101	Ministère des Transports du Q. 754	Autoroute 30		30011	Pierre concassée 20-40 mm (3)	PR50027
500137	Sortie	101	Ministère des Transports du Q. 754	Autoroute 30		30002	Pierre concassée 14 mm (2) (7)	PR50026
500136	Sortie	201	Lamthe - Threlkay			30003	Pierre concassée 56-112 mm (2)	PR50028
500135	Sortie	203	R. Construction			30011	Pierre concassée 10-40 mm (2)	PR50057
500134	Sortie	101	Ministère des Transports du Q. 754	Autoroute 30		30003	Pierre concassée 10-40 mm (2)	PR50057
500133	Sortie	101	Ministère des Transports du Q. 754	Autoroute 30		30003	Pierre concassée 56-112 mm (2)	PR50057
500132	Sortie	101	Ministère des Transports du Q. 754	Autoroute 30		30003	Pierre concassée 20-40 mm (3)	PR50542
500131	Sortie	101	Ministère des Transports du Q. 754	Autoroute 30		30011	Pierre concassée 20-40 mm (3)	PR50542
500130	Sortie	101	Ville de Châteauguay			30003	Pierre concassée 20 mm (2) (4)	PR11135
500129	Sortie	101	Ministère des Transports du Q.			30003	Pierre concassée 20-40 mm (3)	PR11135
500128	Sortie	203	R. Construction			30003	Pierre concassée 20 mm (2) (4)	PR11135
500127	Sortie	203	R. Construction			30003	Pierre concassée 56-112 mm (2)	PR11135
500126	Sortie	204	Paul Gendron et Fils			30011	Possibilité de pierre	PR11490
500125	Sortie	101	Ministère des Transports du Q.			30003	Pierre concassée 56-112 mm (2)	PR50028
500124	Sortie	203	Ville de Mercier			30002	Pierre concassée 14 mm (1) (2)	PR50030
500123	Sortie	203	R. Construction			30011	Pierre concassée 20-40 mm (3)	PR50028
500122	Sortie	203	R. Construction			30011	Pierre concassée 20-40 mm (3)	PR50028
500121	Sortie	203	R. Construction			30011	Pierre concassée 20-40 mm (3)	PR50028
500120	Sortie	203	R. Construction			30011	Pierre concassée 20-40 mm (3)	PR50028
500119	Sortie	203	Ville de Mercier			30002	Pierre concassée 14 mm (1) (2)	PR50030
500118	Sortie	201	Ministère des Transports du Q.			30002	Pierre concassée 14 mm (1) (2)	PR50030
500117	Sortie	201	Lamthe - Threlkay	Autoroute 30		30002	Pierre concassée 14 mm (1) (2)	PR50030
500116	Sortie	201	Ministère des Transports du Q. 754	Autoroute 30		30002	Pierre concassée 56-112 mm (2)	PR50030
500115	Sortie	204	Construction RCL inc.			30003	Pierre concassée 56-112 mm (2)	PR50030
500114	Sortie	101	Ministère des Transports du Q. 754	Autoroute 30		30002	Pierre concassée 14 mm (1) (2)	PR50030
500113	Sortie	203	R. Construction			30002	Pierre concassée 14 mm (1) (2)	PR50030
500112	Sortie	101	Ministère des Transports du Q. 754	Autoroute 30		30002	Pierre concassée 14 mm (1) (2)	PR50030
500111	Sortie	101	Ministère des Transports du Q. 754	Autoroute 30		30003	Pierre concassée 20-40 mm (3)	PR50024
500110	Sortie	101	Ministère des Transports du Q. 754	Autoroute 30		30011	Pierre concassée 56-112 mm (2)	PR50045
500109	Sortie	203	R. Construction			30011	Pierre concassée 20-40 mm (3)	PR50027
500108	Sortie	203	R. Construction			30011	Pierre concassée 10 (1) (4)	PR50057

Clear, precise and easy to consult reports allow you to quickly view the operation results.

Client	NO	NO	DATE	TYPE	LIBRÉ	LIBRÉ avec	LIBRÉ	LIBRÉ	LIBRÉ	LIBRÉ	LIBRÉ	LIBRÉ
CLIENT COMPACT COOL	210574	2010-05-01	11:48	L54766	L54766		24 322 kg	19 970 kg	8 330 kg			
							TOTA L PRODUIT	(1)	8 330 kg			
SEBRO	210466	2010-01-05	02:22	L480715	L480715		33 380 kg	14 570 kg	19 220 kg			
								(1)	19 220 kg			
DELSAN (DELVAL)	214861	2010-01-28	08:13	L707003	L707003		38 470 kg	17 900 kg	20 320 kg			
	214862	2010-01-28	08:19	L484644	L484644		40 870 kg	22 220 kg	20 580 kg			
	214863	2010-01-28	08:26	L707003	L707003		40 870 kg	22 220 kg	20 580 kg			
	214864	2010-01-28	08:37	L484644	L484644		54 400 kg	20 200 kg	34 100 kg			
	214865	2010-01-28	08:46	L707003	L707003		49 370 kg	20 200 kg	29 170 kg			
	214866	2010-01-28	09:29	L484644	L484644		41 850 kg	19 500 kg	22 500 kg			
	214867	2010-01-28	11:29	L484644	L484644		40 870 kg	17 900 kg	20 580 kg			
	214868	2010-01-28	11:32	L707003	L707003		41 850 kg	17 900 kg	20 580 kg			
	214869	2010-01-28	11:38	L484644	L484644		39 240 kg	17 900 kg	21 000 kg			
	214870	2010-01-28	12:01	L707003	L707003		41 850 kg	17 900 kg	20 580 kg			
	214871	2010-01-28	14:45	L707003	L707003		44 250 kg	19 500 kg	23 000 kg			
	214872	2010-01-28	14:46	L707003	L707003		44 250 kg	19 500 kg	23 000 kg			
	214873	2010-01-28	14:47	L484644	L484644		44 250 kg	19 500 kg	23 000 kg			
	214874	2010-01-28	14:48	L484644	L484644		41 850 kg	17 900 kg	20 580 kg			
	214875	2010-01-28	08:09	L707003	L707003		41 850 kg	17 900 kg	20 580 kg			
	214876	2010-01-28	08:16	L484644	L484644		41 850 kg	17 900 kg	20 580 kg			
	214877	2010-01-28	08:09	L707003	L707003		39 400 kg	18 500 kg	20 500 kg			
	214878	2010-01-28	08:24	L707003	L707003		39 400 kg	18 500 kg	20 500 kg			
	214879	2010-01-28	08:29	L707003	L707003		41 850 kg	17 900 kg	20 580 kg			
	214880	2010-01-28	08:29	L484644	L484644		41 850 kg	17 900 kg	20 580 kg			
	214881	2010-01-28	08:29	L707003	L707003		37 200 kg	18 500 kg	20 000 kg			
	214882	2010-01-28	08:29	L484644	L484644		40 870 kg	17 900 kg	20 580 kg			
	214883	2010-01-28	08:29	L484644	L484644		40 870 kg	17 900 kg	20 580 kg			
	214884	2010-01-28	08:29	L707003	L707003		39 240 kg	17 900 kg	21 000 kg			
	214885	2010-01-28	08:29	L484644	L484644		39 240 kg	17 900 kg	21 000 kg			
	214886	2010-01-28	08:29	L484644	L484644		39 240 kg	17 900 kg	21 000 kg			
	214887	2010-01-28	08:29	L707003	L707003		41 850 kg	17 900 kg	20 580 kg			
	214888	2010-01-28	08:29	L707003	L707003		41 850 kg	17 900 kg	20 580 kg			
	214889	2010-01-28	08:29	L484644	L484644		41 850 kg	17 900 kg	20 580 kg			
	214890	2010-01-28	08:29	L484644	L484644		41 850 kg	17 900 kg	20 580 kg			
	214891	2010-01-28	08:29	L707003	L707003		41 850 kg	17 900 kg	20 580 kg			
	214892	2010-01-28	08:29	L707003	L707003		41 850 kg	17 900 kg	20 580 kg			
	214893	2010-01-28	08:29	L484644	L484644		41 850 kg	17 900 kg	20 580 kg			
	214894	2010-01-28	08:29	L707003	L707003		41 850 kg	17 900 kg	20 580 kg			
	214895	2010-01-28	08:29	L707003	L707003		41 850 kg	17 900 kg	20 580 kg			

